

# User Manual

# Digital LED Poster

— Indoor and outdoor series P2/P2.5/P3



# Instructions

Thank you for placing your trust in us. Please read the product instructions carefully before use. While we strive for the upmost precision for this manual, please be noted that the content of this manual book is subject to modification without prior notice. Contact us if you have any question or suggestion to which we would attach the greatest importance.

## Precautions

**Please read the following carefully to ensure proper use. Irreparable damage could be resulted if the safety guidelines are ignored.**

- 1) Avoid strong shock or vibrations to the LED display during transportation and storage.
- 2) Prevent the LED display from being scratched or damaged during installation.
- 3) Do not face the LED display to the air conditioner vent.
- 4) Do not place or use the LED display in an ambient environment with volatile, corrosive gases or chemicals.
- 5) Ensure tight connection between the LED display power plug and socket and proper grounding.
- 6) For any early detection of smoke, please immediately cut off the power, and contact qualified professionals.



## Contents

### Chapter 1 Product Specification and Illustrations

- 1.1 Product Specifications
- 1.2 Product Appearance
- 1.3 Illustrations for Port Connection
  - 1.3.1 Network Cable Connection to PC
  - 1.3.2 Synchronization of the LED poster and PC by HDMI Cable Connection
  - 1.3.3 USB Flash Drive Connection
  - 1.3.4 Power Interface and Power Indicator
  - 1.3.5 Illustrations for the Cable Connection of One Poster and of Multiple Posters

### Chapter 2 Installation Guidance

- 2.1 Floor-standing Installation
  - 2.1.1 Steps for Bracket and Cabinet Installation
- 2.2 Hanging (Optional)
- 2.3 Vertical Wall Mount (Optional)
- 2.4 Horizontal Wall Mount (Optional)

### Chapter 3 Function Introduction

- 3.1 Function of Ports
- 3.2 Display Mode
  - 3.2.1 Single Unit
  - 3.2.2 Extended Multi-unit Splicing

## **Chapter 4 Settings**

4.1 Settings for Single Unit Display

4.2 Settings for Extended Multi-unit Splicing Display

## **Chapter 5 Program Editing and Publishing**

5.1 Program Editing

5.2 Content Publishing

5.2.1 Publishing programs by connecting to the WiFi hotspot of LED Poster

5.2.2 Publishing Program by Network Cable Connection Between LED Poster and PC

5.2.3 Publishing Program via USB Flash Drive

## **Chapter 6 Daily Maintenance**

6.1 Maintenance

## **1.1 Specification**

NSE has its own design and R&D department, which distinguishes NSE from its competitors. Indoor P2/P2.5/P3 are available and outdoor P2.5/P3 available.

Indoor

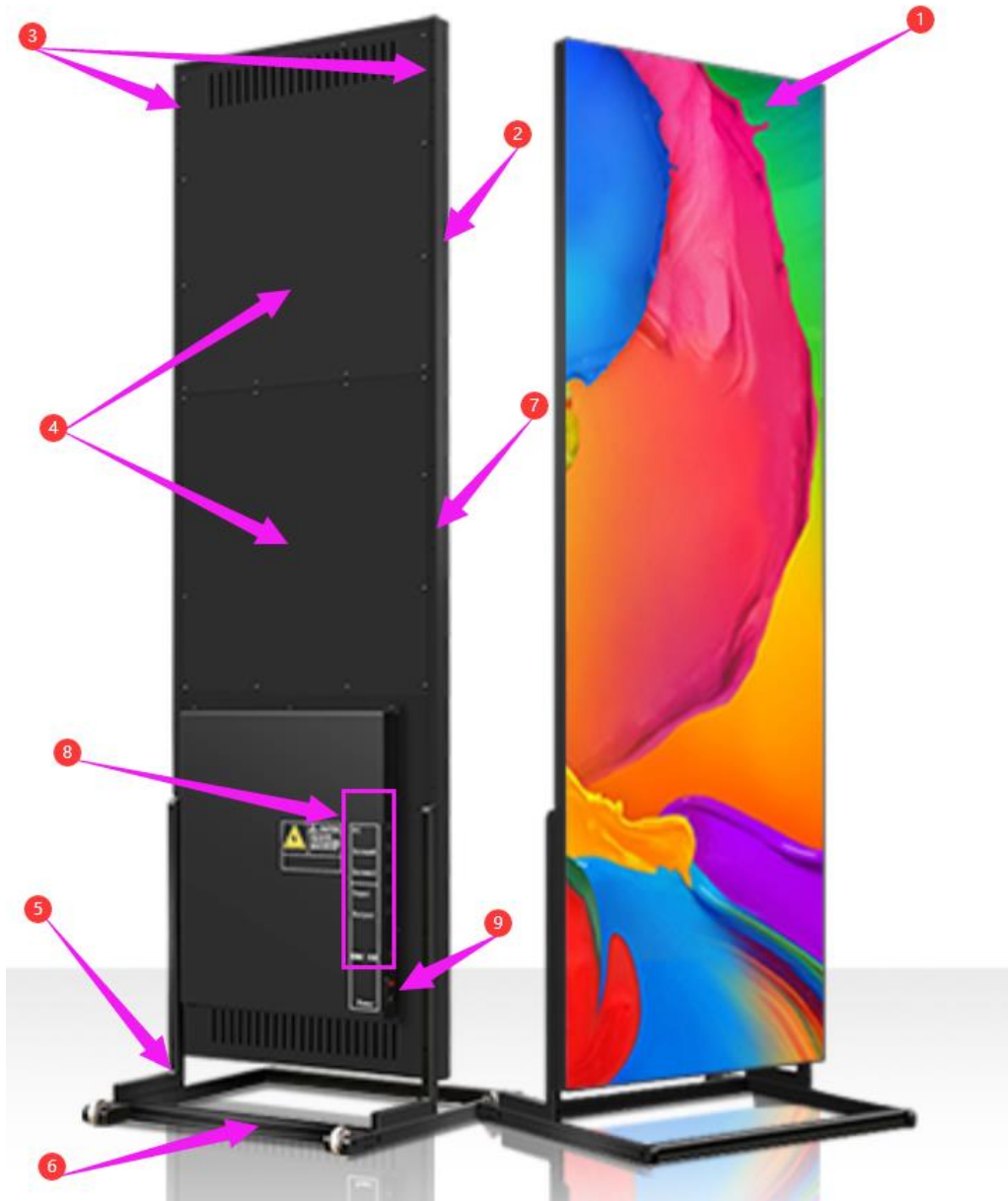
## Outdoor

Model Type	PT2	PT2.5	PT3
Pixel pitch	2mm	2.5mm	3 mm
Destiny	250,000 dots /SQM	160,000 dots /SQM	111,111 dots /SQM
LED Type	SMD1515 Mat Black	SMD 2121 Mat Black	SMD 2121 Mat Black
Pixel type(R / G / B)	1R1G1B (3 in 1)	1R1G1B (3 in 1)	1R1G1B (3 in 1)
Module size	256 x 128mm	160 x 160mm	192 x 192mm
Module Resolution	128*64pixel	64*64pixel	64*64 pixel
Sreen Size (H*W)	768*1920mm	640*1920mm	576*1920mm
Feet Size	2.52 * 6.3 feet	2.10* 6.3 feet	1.88 * 6.3 feet
Screen Resolution	384 * 960 pixel	256 * 768 pixel	192 * 640 pixel
Frame Size	1930mm(H)*776mm(W)*45mm(T)	1930mm(H)*648mm(W)*45mm(T)	1930mm(H)*584mm(W)*45mm(T)
Case Material	Aluminum	Aluminum	Aluminum
Weight	46kg/ unit	38kg/ unit	35kg/ unit
Drive mode	1/32 Scan	1/32 Scan	1/16scan
Viewing Distance	> 2 M	> 2.5 M	> 3 M
Brightness	> 1,000 cd/m <sup>2</sup>	> 1,000 cd/m <sup>2</sup>	> 1,000 cd/m <sup>2</sup>
Viewing Angle	140° (H)/140°(V)	140° (H)/140°(V)	140° (H)/140°(V)
Refresh rate	>1,920 Hz (3840HZ optional)	>1,920 Hz (3840HZ optional)	>1,920 Hz (3840HZ optional)
Input voltage	AC90-240V	AC90-240V	AC90-240V
Maximum Power Consumption	1170Wper unit	750Wper unit	600W per unit
Average Power Consumption	350Wper unit	220Wper unit	280W per unit
Control method:	Asynchronous(WIFI/USB/LAN/HDMI)	Asynchronous (WIFI/USB/LAN/HDMI)	Asynchronous (WIFI/USB/LAN/HDMI)
Temperature Operating (°C)	-40°~+75°	-40°~+75°	-40°~+75°
Working Humidity	10%-95%RH	10%-95%RH	10%-95%RH
IP Rating	IP20	IP20	IP20
Application	Indoor/ Semi-Outdoor	Indoor/ Semi-Outdoor	Indoor/ Semi-Outdoor
Certificate	CE/ROHS/FCC	CE/ROHS/FCC	CE/ROHS/FCC

Model Type	P2.5	P3	P3
Pixel pitch	2.5mm	3mm	3 mm
Destiny	160000	111111	111111
LED Type	SMD1415	SMD1921	SMD1921
Pixel type(R / G / B)	1R1G1B (3 in 1)	1R1G1B (3 in 1)	1R1G1B (3 in 1)
Module size	160 x 160mm	192 x 192 mm	192 x 192 mm
Module Resolution	64 x 64 pixel	64 x 64 pixel	64 x 64 pixel
LED Moudle layout(W*H)	4 x 12mm	3 x 10	4 x 10
Display Size	640*1920mm	576 x 1920mm	768 x 1920 mm
Display Resolution	256*768pixel	192 x 640pixel	256 x 640pixel
Display area	1.23m <sup>2</sup>	1.11m <sup>2</sup>	1.48m <sup>2</sup>
Cabinet Size(mm)	643 x 1930mm	579 x 1930 mm	781 x 1930 mm
Resolution(W*H)	256 x 768	192x640	256 x 640
Case Material	Aluminum	Aluminum	Aluminum
Weight	45kg/unit	50kg /unit	55kg /unit
Drive mode	1/32scan	1/16scan	1/16scan
Viewing Distance	>2m	>3m	>3m
Brightness	5000 cd/m <sup>2</sup>	5000 cd/ m <sup>2</sup>	5000 cd/ m <sup>2</sup>
Viewing Angle	140°/140°	140°/140°	140°/140°
Refresh rate	>1920Hz	>1920Hz	>1920Hz
Input voltage	AC 240/100*10%	AC 240/100*10%	AC 240/100*10%
Maximum Power Consumption	1350W	1050W	1400W
Average Power Consumption	450W	315W	420W
Control method:	Asynchronous(WIFI/USB/LAN/HDMI)	Asynchronous(WIFI/USB/LAN/HDMI)	Asynchronous(WIFI/USB/LAN/HDMI)
Temperature Operating (°C)	'-10°~+40°	'-10°~+40°	'-10°~+40°
Working Humidity	10%-90%	10%-90%	10%-90%
IP Rating	IP65	IP65	IP65
Application	Outdoor	Outdoor	Outdoor
Certificate	CE/ROHS/FCC	CE/ROHS/FCC	CE/ROHS/FCC



## 1.2 Product Appearance

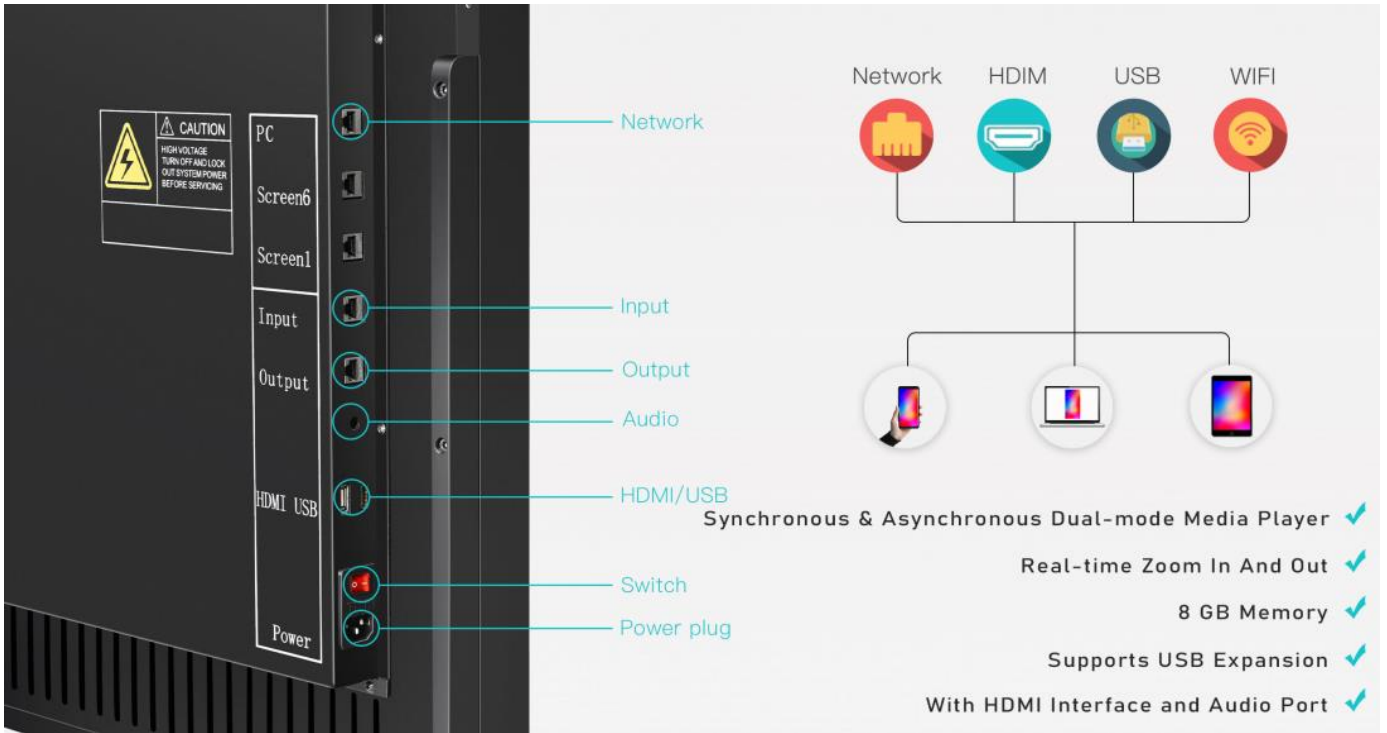


**Note :**

- ① LED Screen      ② Main frame      ③ Area for hanging installation
- ④ Logo area      ⑤ "L" type bracket      ⑥ Base bracket
- ⑦ Lock area      ⑧ Power interface and switch
- ⑨ Port area from top: USB flash drive, Screen6, screen1, Input, output, Audio, HDMI/USB





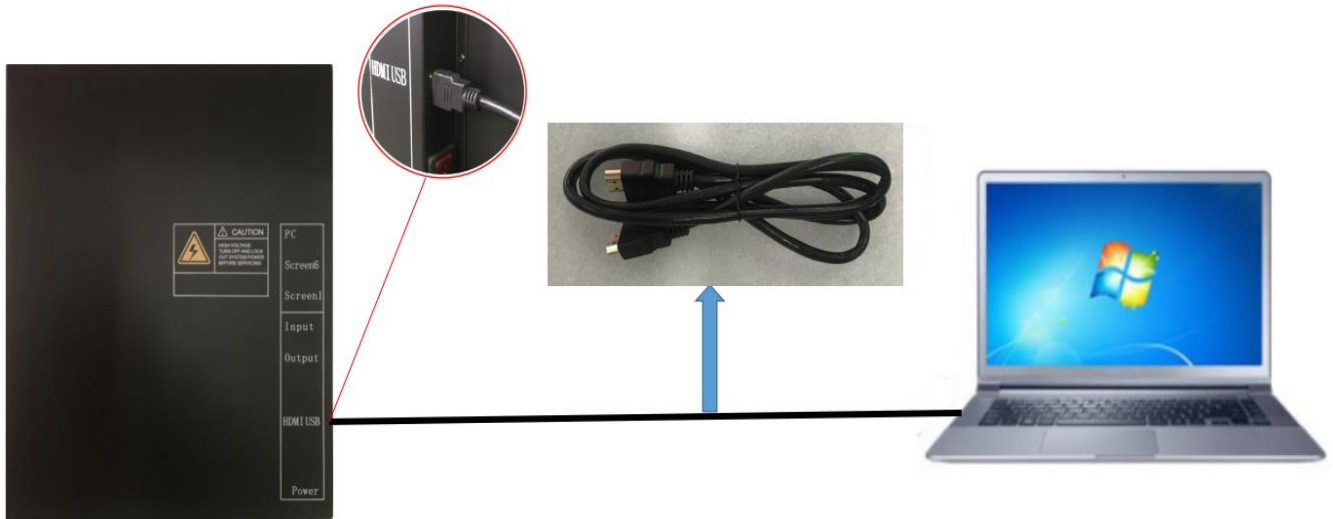


### 1.3 Illustrations for Port Connection

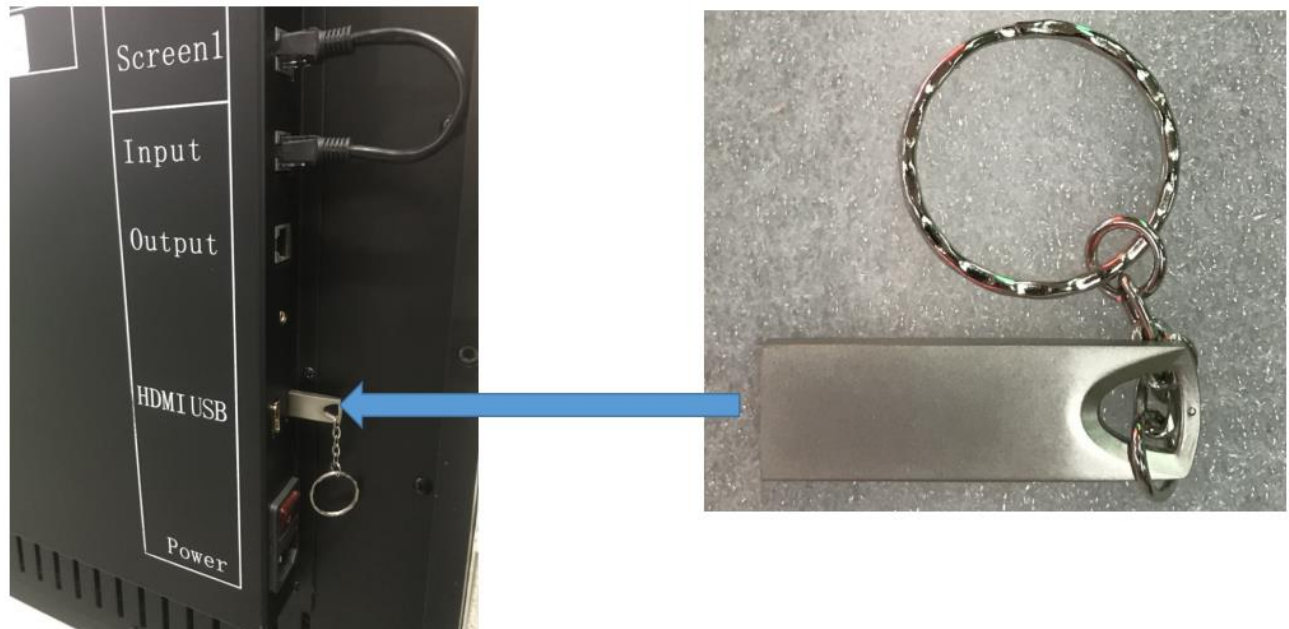
#### 1.3.1 Network Cable Connection to PC



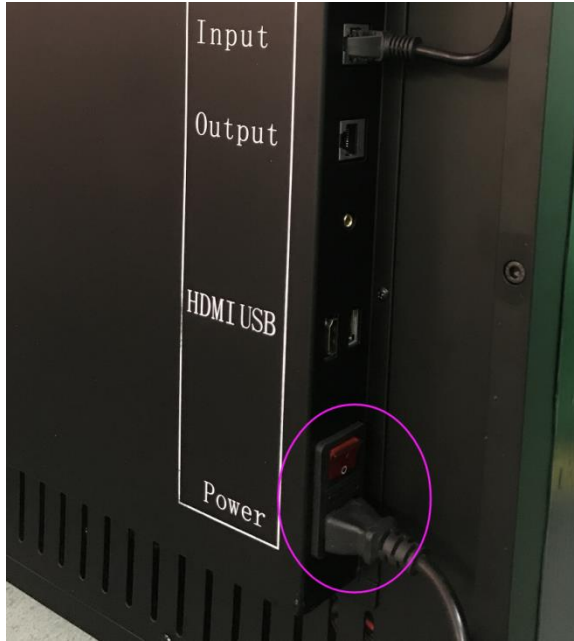
### 1.3.2 Synchronization of the Poster and PC by HDMI Cable Connection



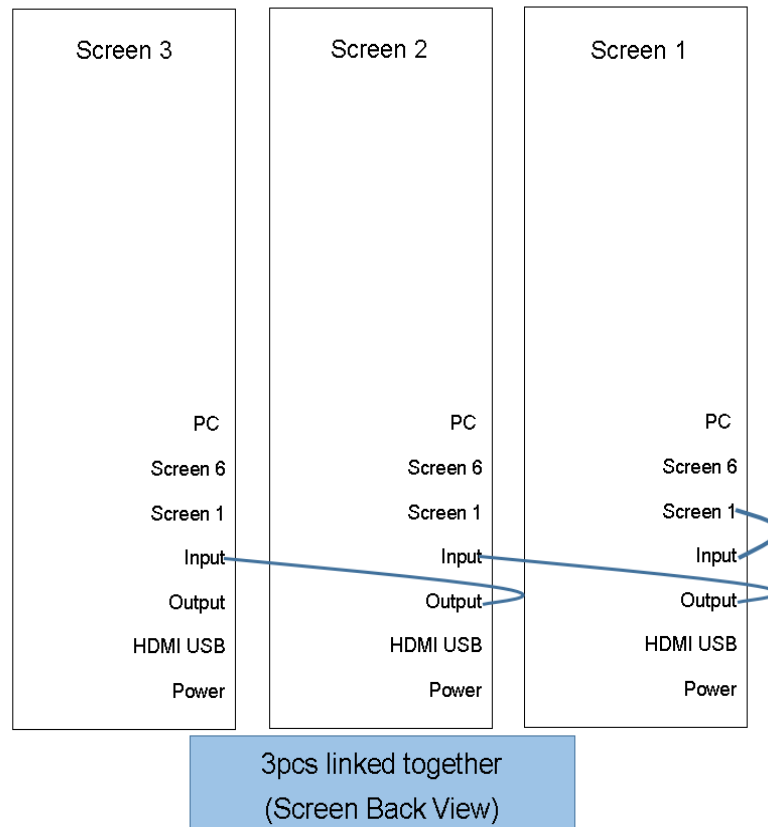
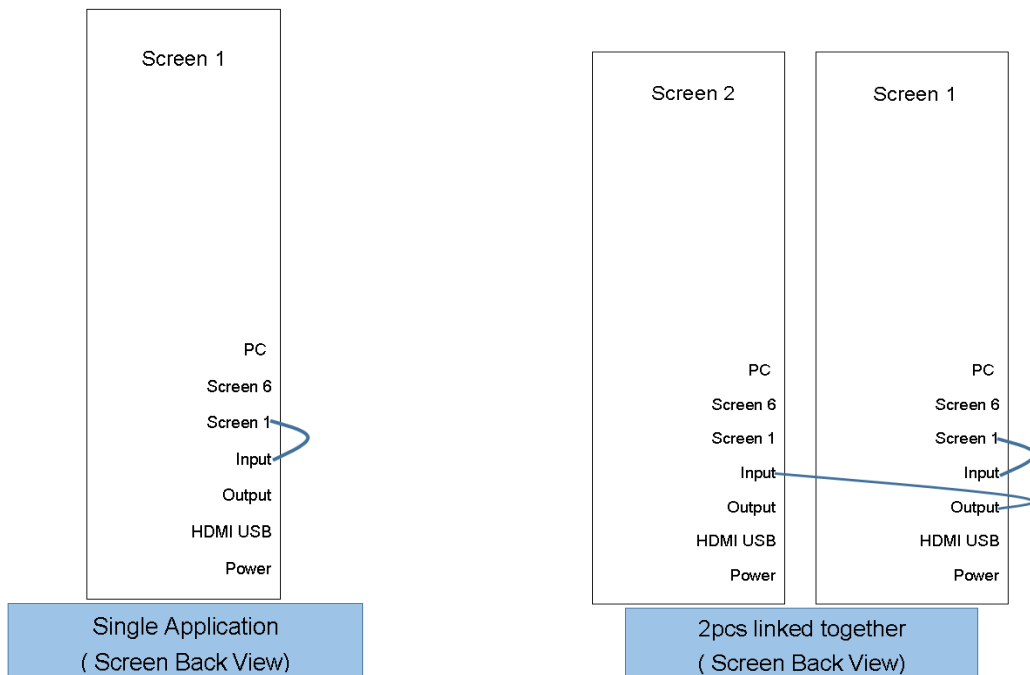
### 1.3.3 USB Flash Drive Connection



### 1.3.4 Power Interface and Power Indicator



### 1.3.5 Illustrations for the Cable Connection of One poster and of Multiple Posters (Pattern Identified)



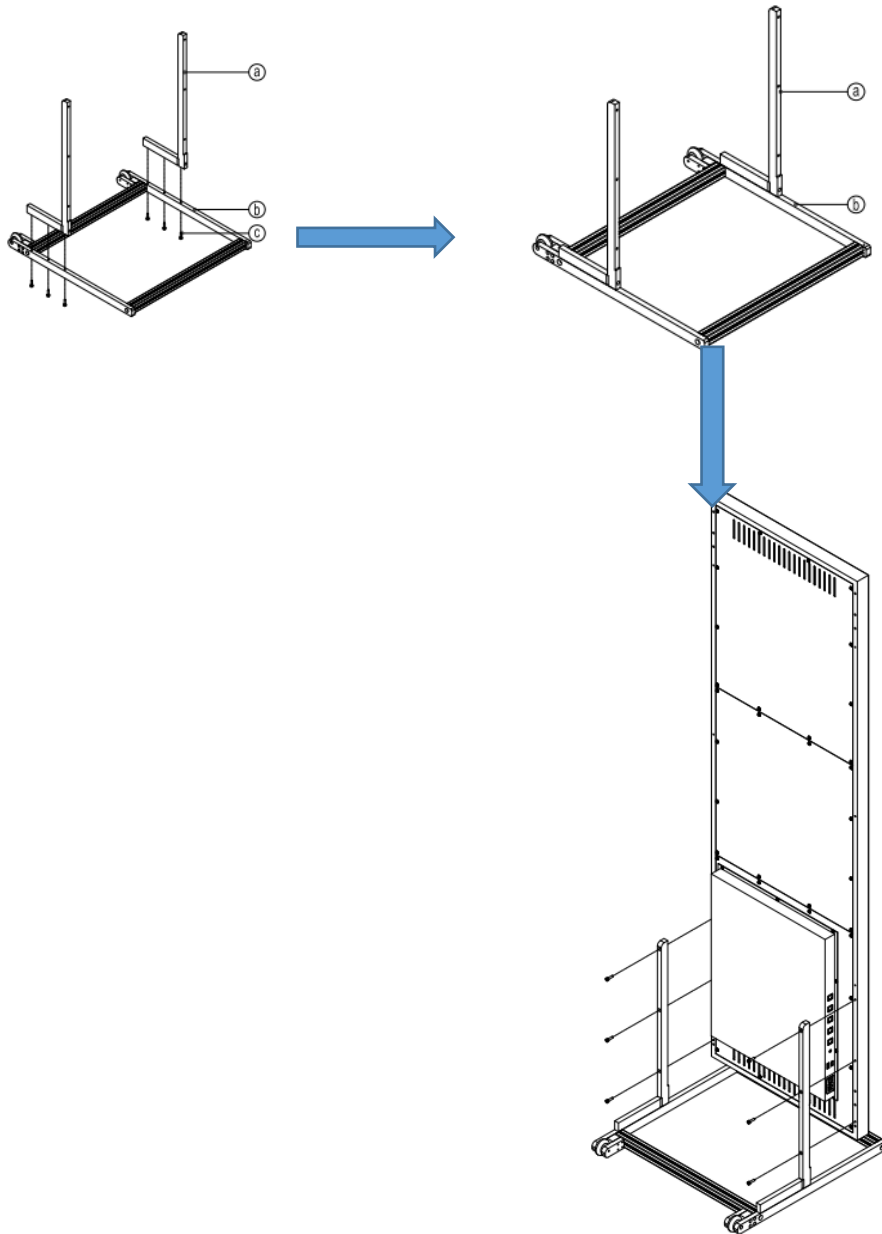
## Chapter 2 Installation Guidance

Install your Digital LED Poster in the way which best suits your application.

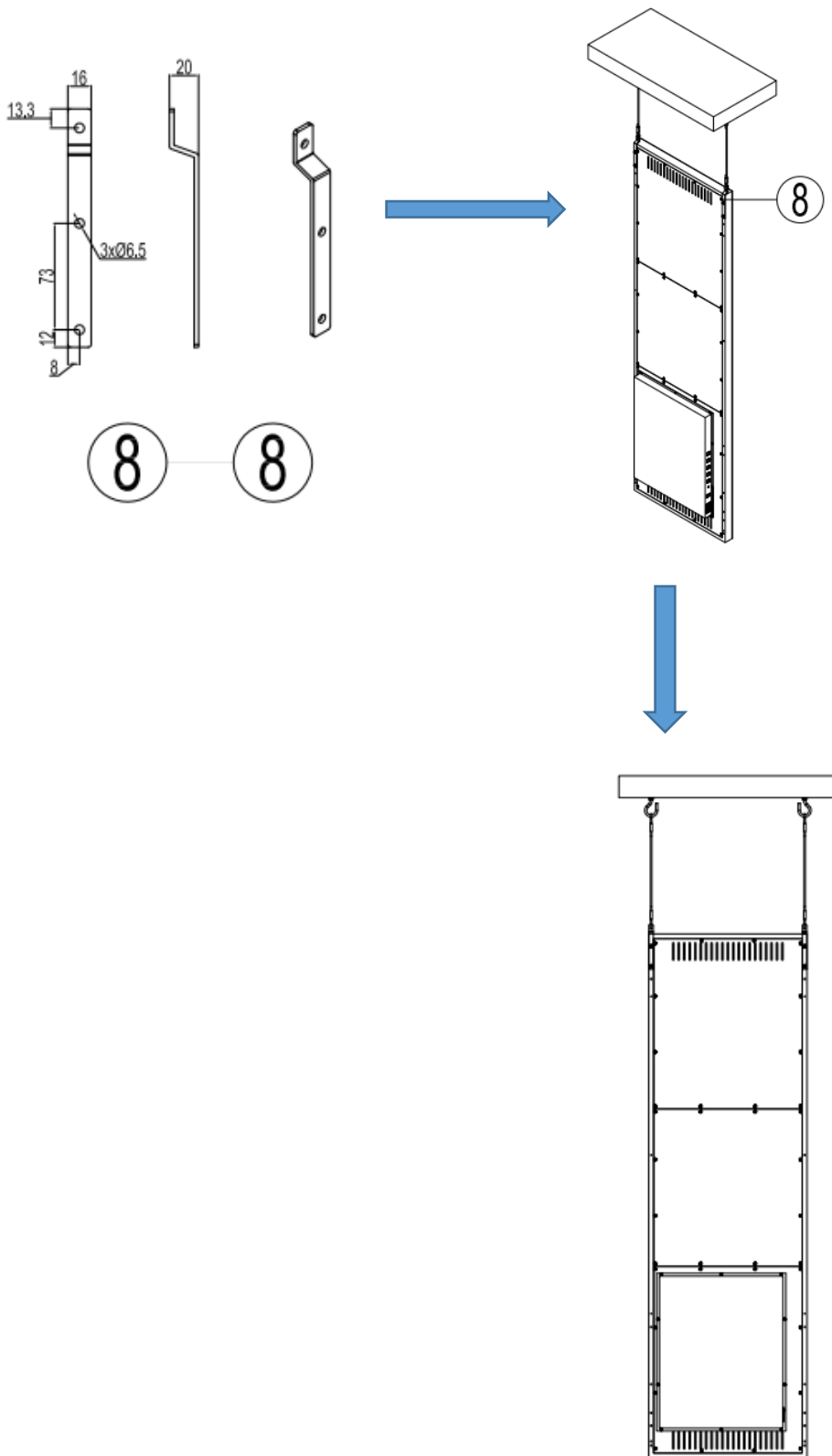
### 2.1 Floor-standing Installation



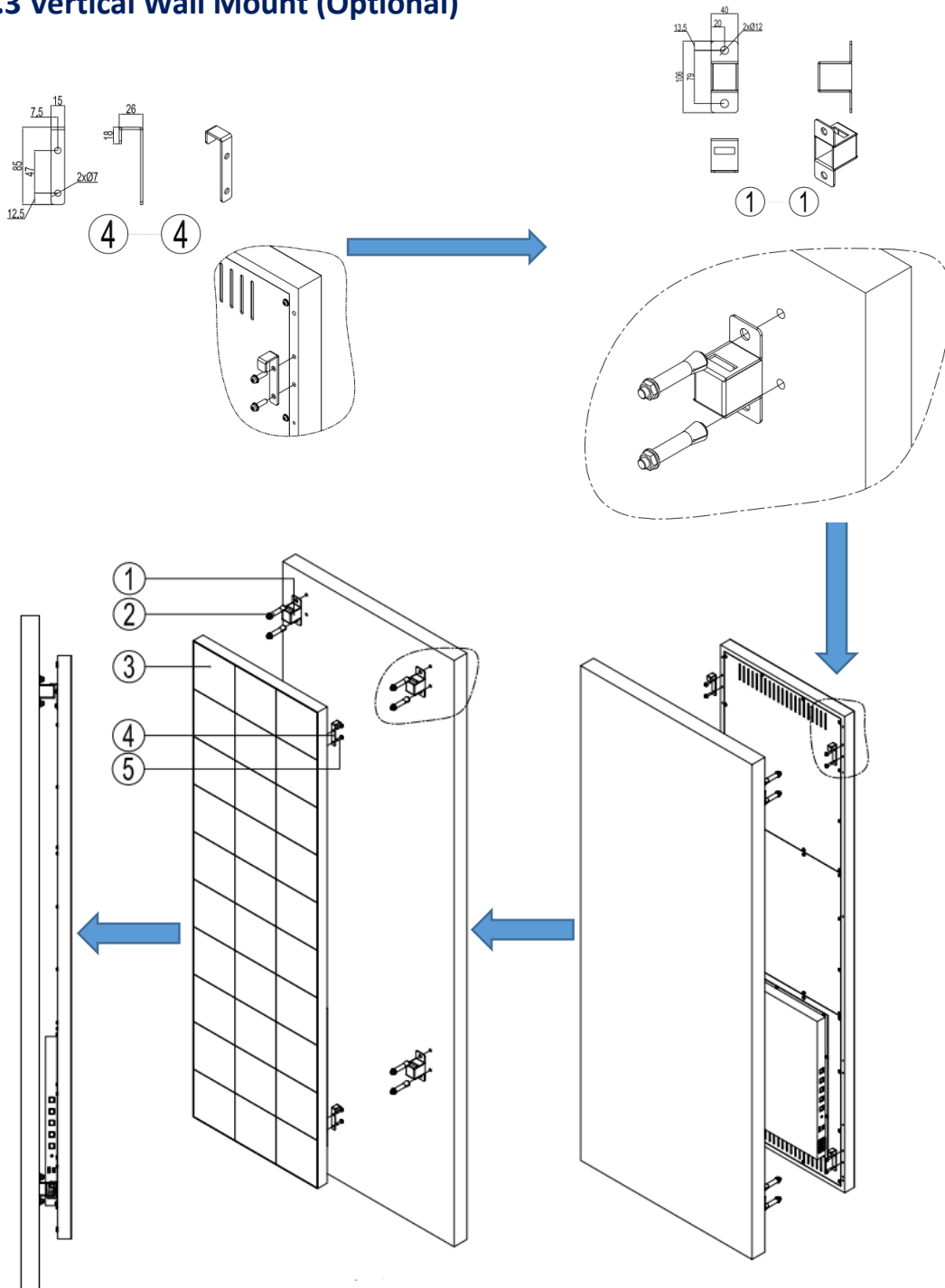
### 2.1.1 Steps for Bracket and Cabinet Installation



## 2.2 Hanging (Optional)

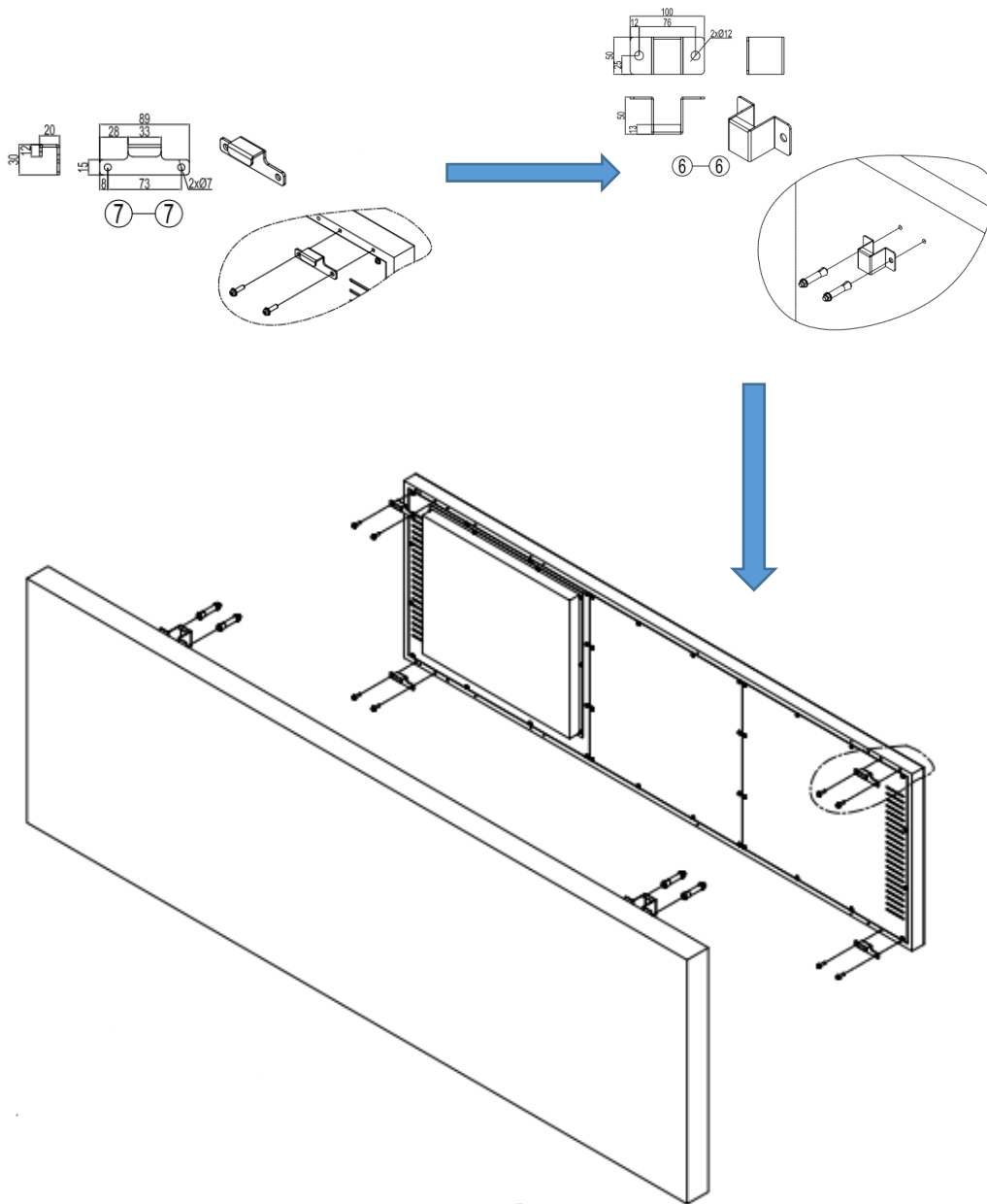


### 2.3 Vertical Wall Mount (Optional)



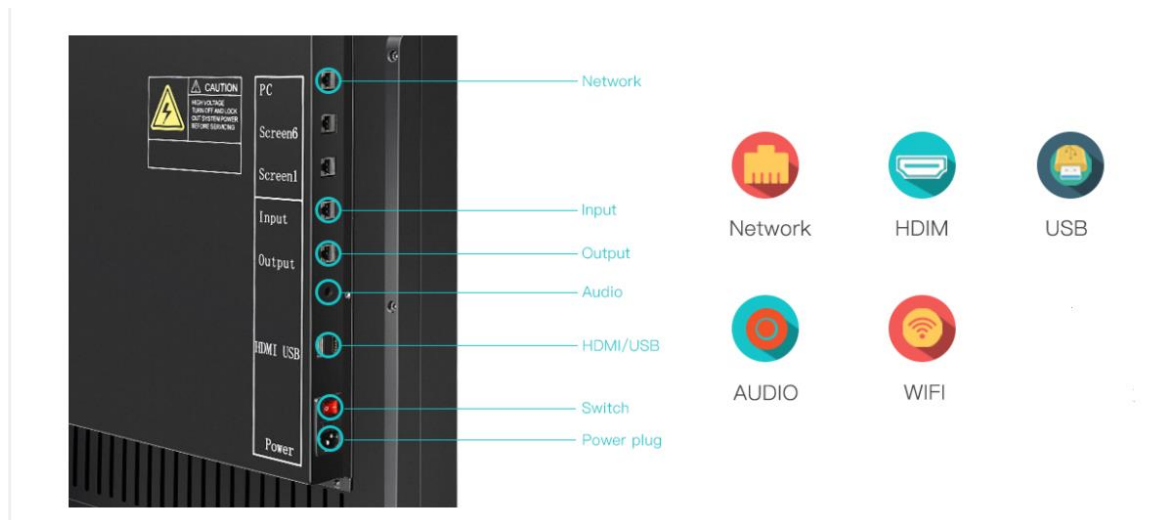


## 2.4 Horizontal Wall Mount (Optional)



## Chapter 3 Function Introduction

### 3.1 Function of Ports



**3.1.1 PC:** For connection to PC for program transmission through the network cable.

**3.1.2 Input, Output, Screen1 and Screen6:** For independent display of a single screen or extended display of multiple screens.

**3.1.3 Audio:** Audio output port (optional), which can be connected to external speakers or other Audio equipment.

**3.1.4 HDMI:** Video signal input interface, which can be connected to PC for synchronous display.

**3.1.5 USB:** Can be connected to the USB Flash Drive to play the program materials contained.

**3.1.6 Power:** Power interface for AC 110V/220V.

## 3.2 Display Mode

NSE LED Posters can be set to operate independently to present different contents or be spliced together to function as one large screen.

### 3.2.1 Single Unit

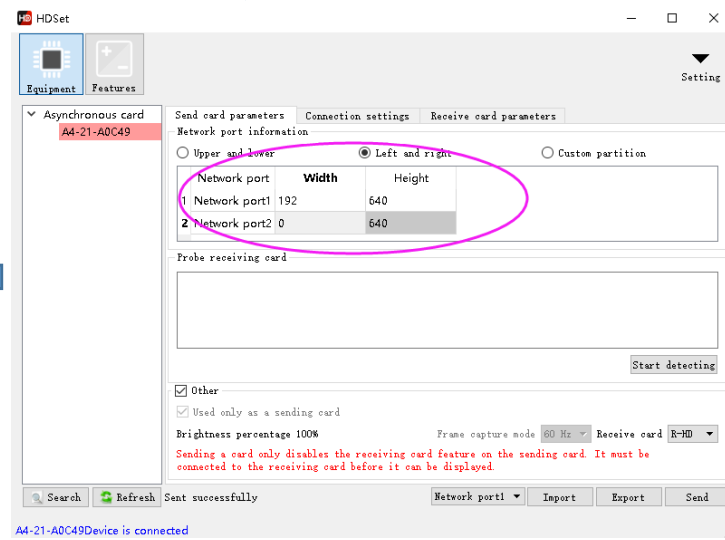
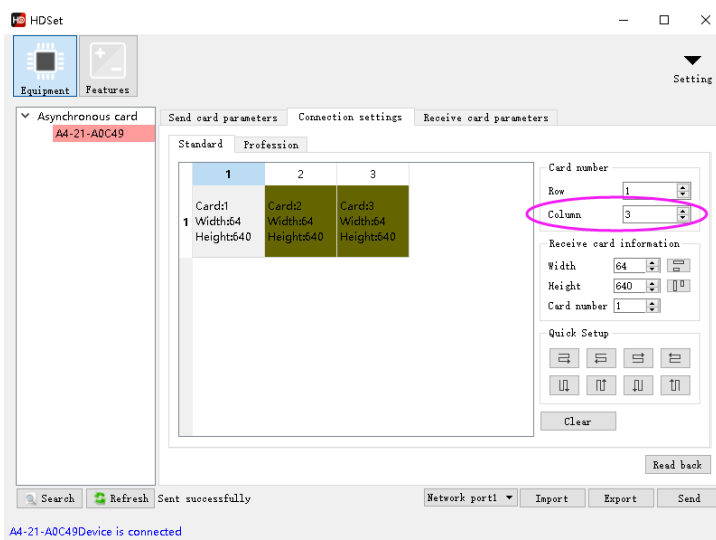
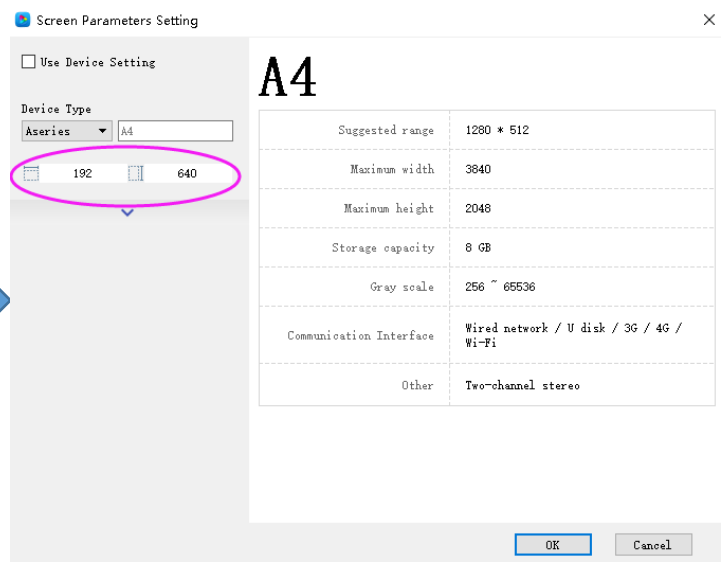
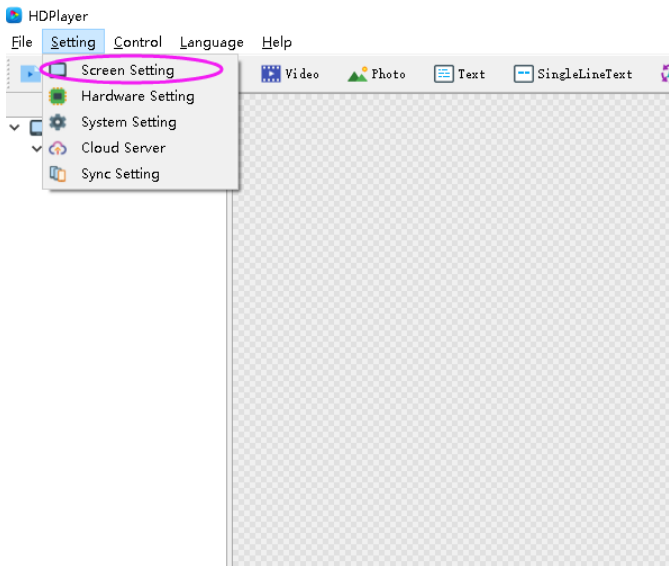


### 3.2.2 Extended Multi-unit Splicing

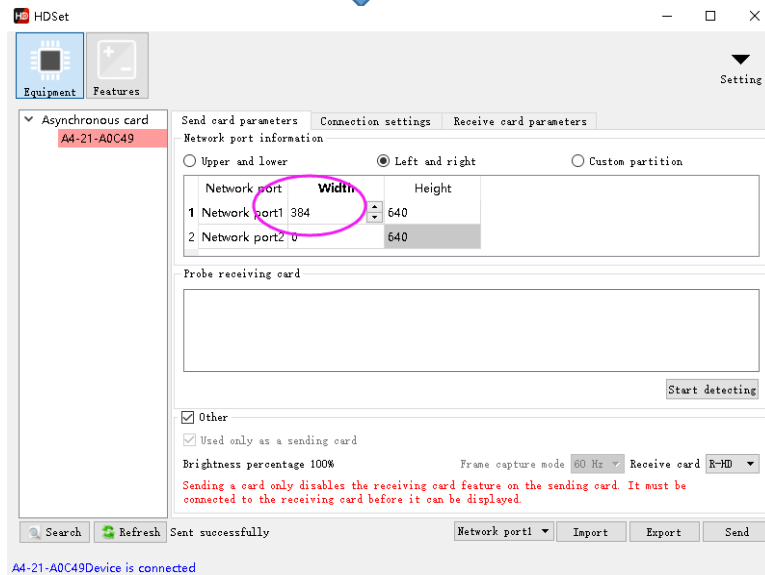
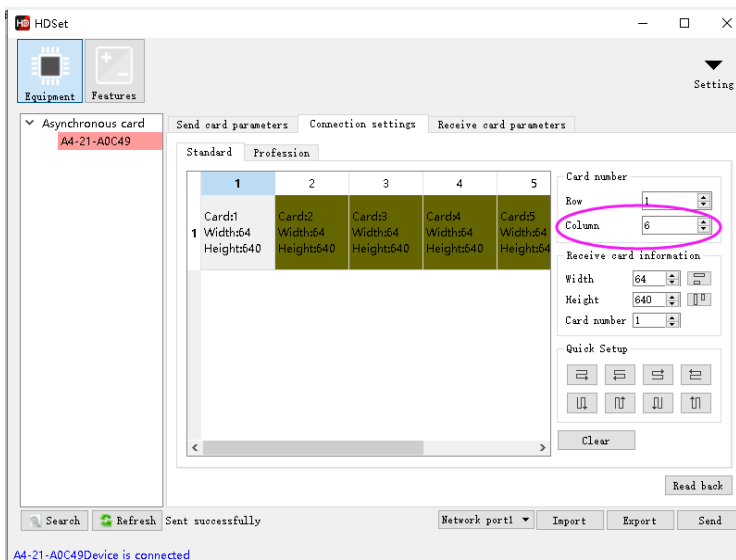
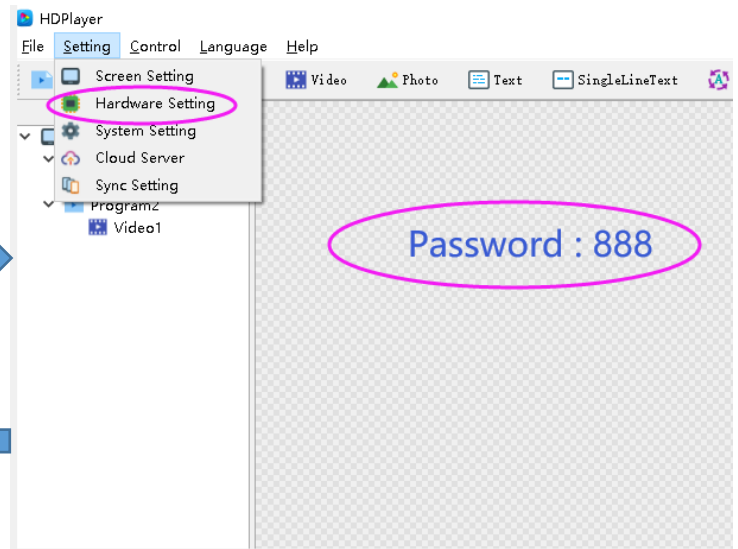
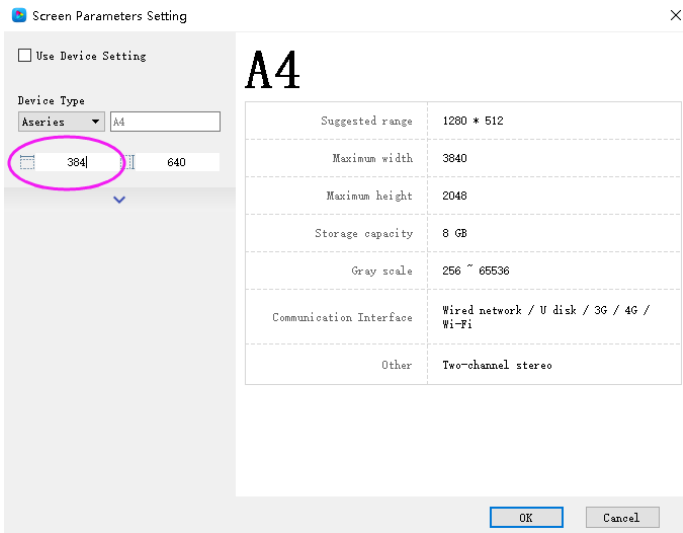


# Chapter 4 Settings

## 4.1 Settings for Single Unit Display



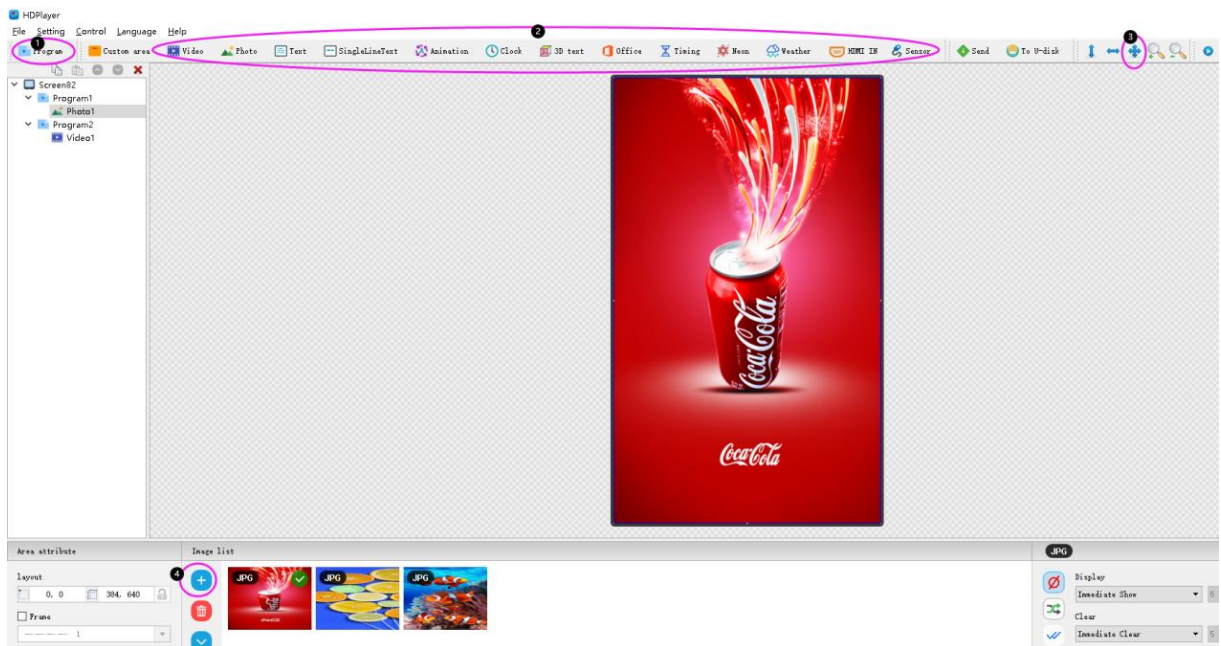
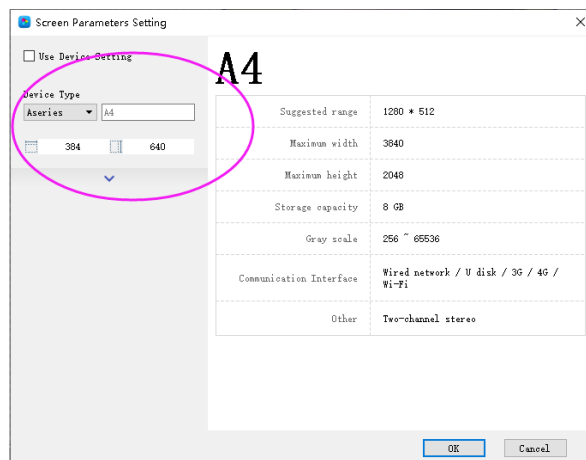
## 4.2 Settings for Extended Multi-unit Splicing Display(the resolution of width of the extended screen is the multiple of a single poster)



## Chapter 5 Program Editing and Publishing

### 5.1 Program Editing

Select the device name in the Screen Parameter Setting, and configure the corresponding resolution before editing the program (video, picture, text, etc.). Single or multiple programs can be created at the same time.

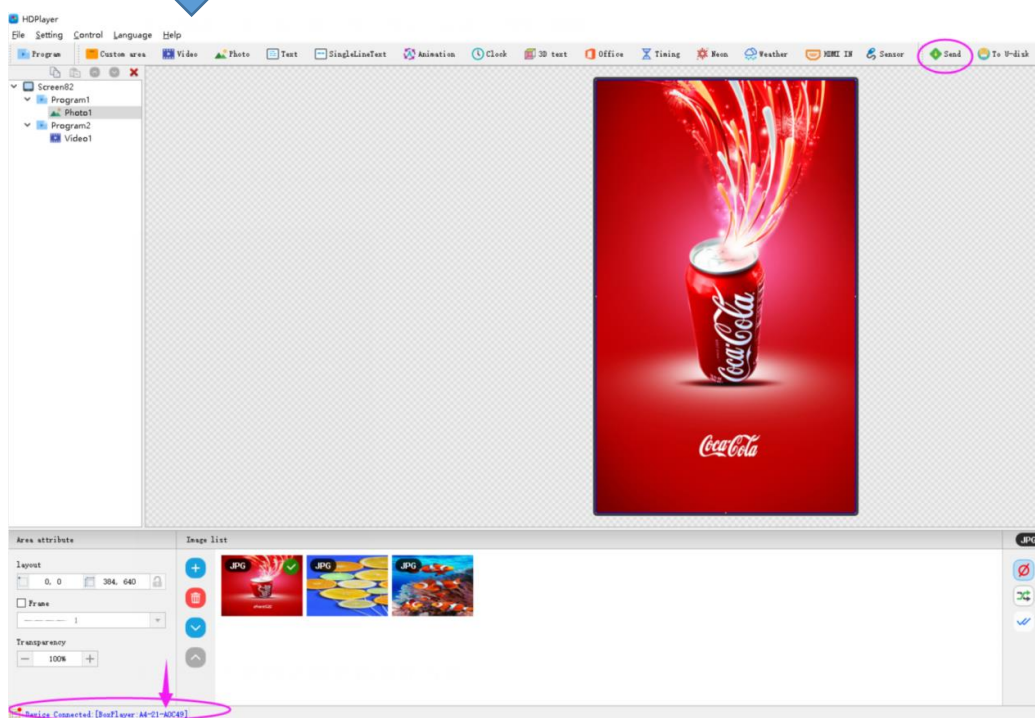


## 5.2 Content Publishing

The edited program can be sent to the LED display via three ways listed below.

### 5.2.1 Publishing Programs by Connecting to the WiFi Hotspot of LED Poster

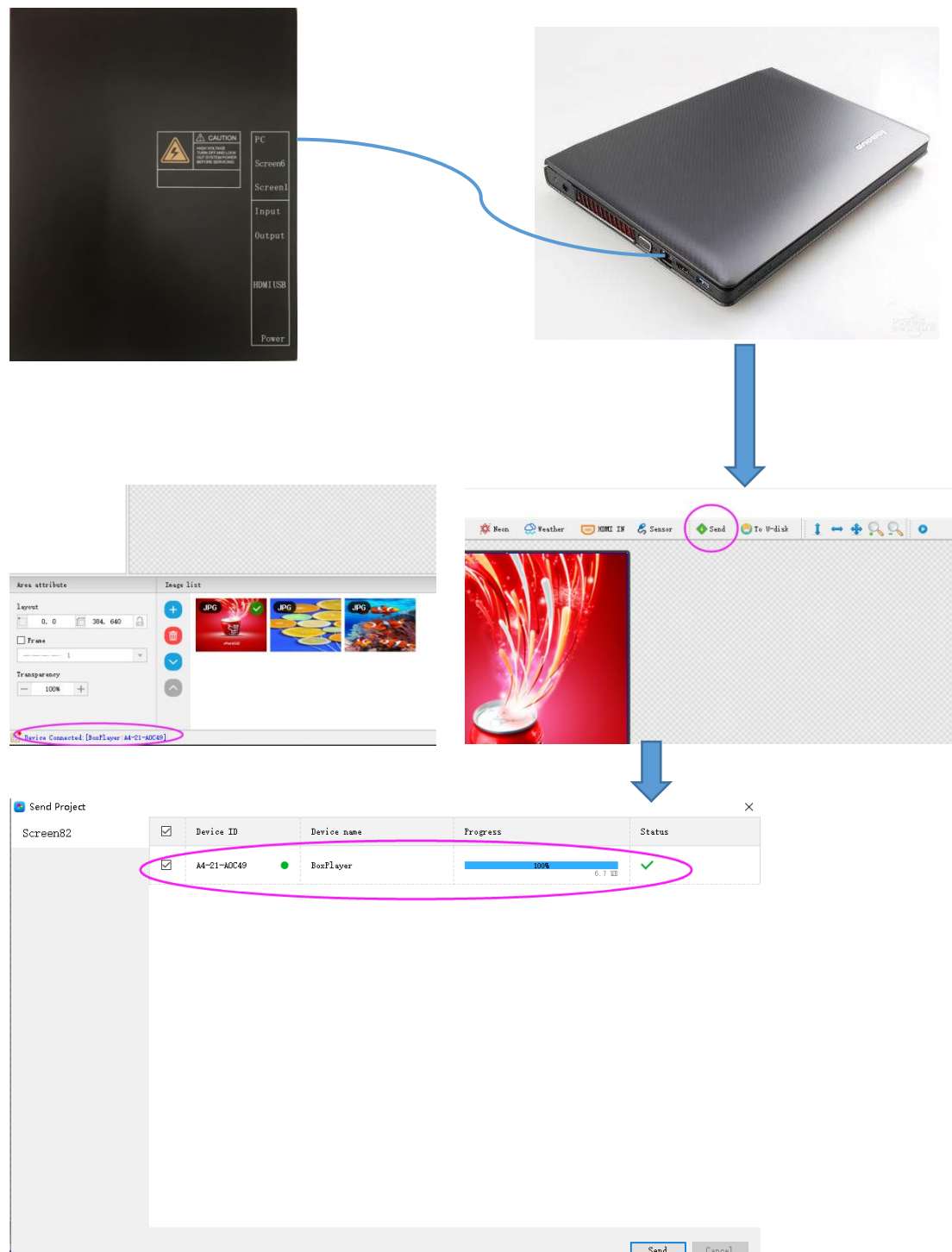
Each LED Poster is matched with a separate WiFi hotspot. Search in your PC WiFi list for the WiFi hotspot of the LED Poster you want to control and connect to it. The initial password is 88888888.





### 5.2.2 Publishing Program by Network Cable Connection Between LED Poster and PC

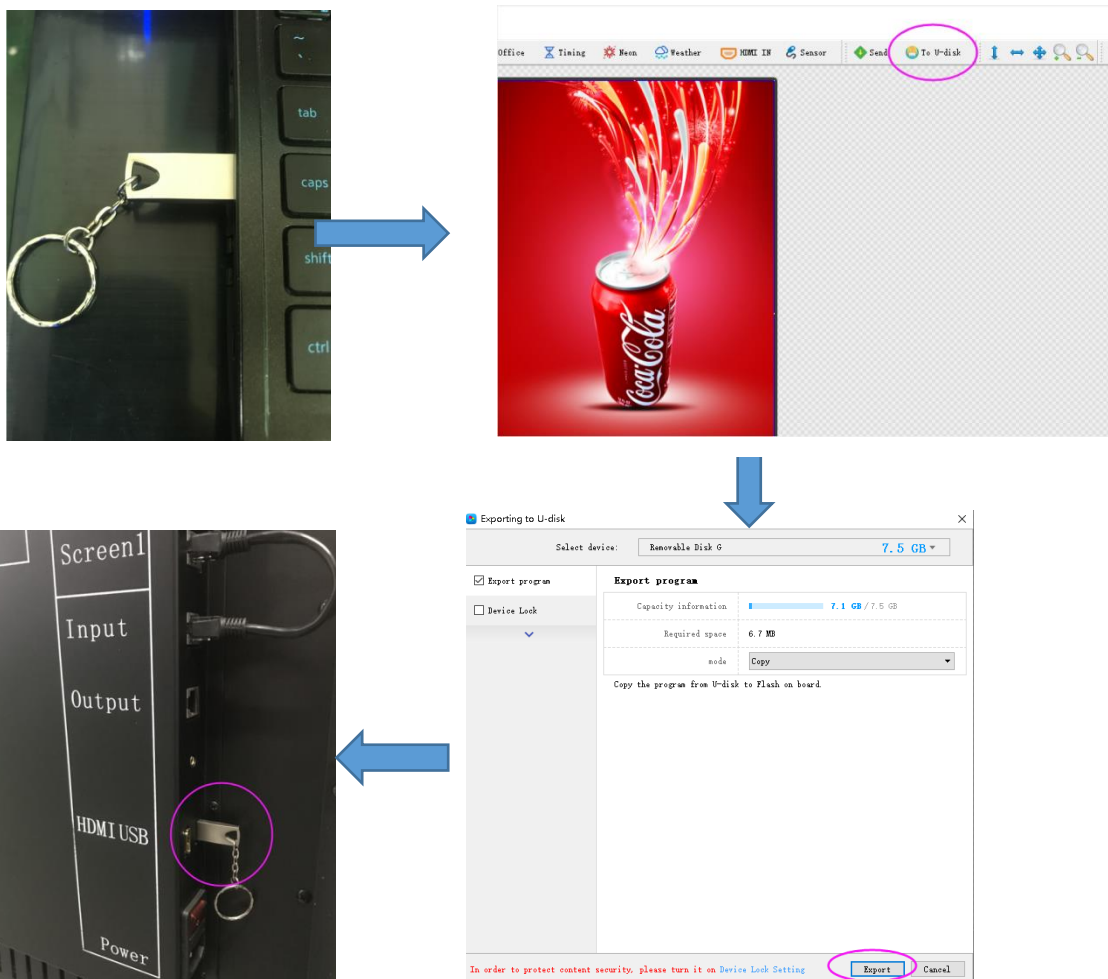
Connect the screen and PC through the network cable. The LED Poster will be automatically identified and connected to the PC after the software is initiated, and by clicking “Send”, the edited program will be published on the screen.





### 5.2.3 Publishing Program via USB Flash Drive

Insert the empty USB Flash Drive to the USB port; Click "To U-disk" and the edited program will be exported to the USB Flash Drive. After the program is exported to the USB flash drive, plug it out and insert it into the "USB" port of the LED poster. The program will automatically be uploaded. Pull out the USB flash drive after the uploading is completed.



---

## Chapter 6 Maintenance

### 6.1 Maintenance

- 1) Keep the storage environment of the LED screen well ventilated and dry.
- 2) Do not clean the LED display with water or chemical solvents.
- 3) Ensure that the LED display is powered on at least twice a week for at least 30 minutes each time.